

SHELLY PAMENSKY

the tension of imperfection



Shelly Pamensky is a contemporary artist working from her studio in London. Her practice emerges from prolonged confrontation with uncertainty, fear, and the persistent demand for personal transformation. Painting functions as both process and proof, a material space in which doubt is not resolved quickly but carried through to clarity.

Pamensky was raised in Southern Africa and later trained in London. Her early exposure to painting formed a foundational relationship with material that was later reshaped by significant personal and professional upheavals. These experiences redirected her path and positioned painting as a site of endurance, reinvention, and inner refinement rather than resolution.

Her works are constructed through an exacting process using reflective metallic pigments and translucent industrial paints. The method allows little margin for error and accepts failure as integral. Works that collapse are often dismantled and reformed into woven compositions, embedding rupture and recovery directly into their structure.

Pamensky has exhibited at selected fairs and her work has been presented in collaboration with established galleries and institutions. She has participated in charity auctions with Christie's and has collaborated with collectors, curators, and internationally recognised design studios, including Kelly Hoppen.

Her work is held in international private and institutional collections, including Morgen & Stern, as well as in established private collections worldwide.

artist bio

I create art from the place where doubt and desire collide. My work begins in fear, tension, and uncertainty, and I remain inside those states until they shift into something luminous. Painting is not a search for comfort for me. It is a deliberate decision to stay present with instability and to allow it to shape the work materially.

Every piece is built through a process that is both exacting and fragile. Industrial metal flakes, adhesives, and translucent automotive paints demand absolute precision under intense time pressure. A minor deviation can undo hours of preparation. This vulnerability is not incidental. It mirrors an internal space where expectations, anxiety, and ambition exist simultaneously. I work there on purpose.

Failure is a constant possibility. Many works collapse at the final stage, losing their surface integrity or their clarity. When this happens, I do not abandon them. I cut the canvas apart and reweave it into a new form. These woven works hold the memory of disappointment and persistence at the same time. Each strip carries a fragment of intention, collapse, and renewal.

The portal paintings appear calm and expansive, but their stillness is earned. Thousands of micro decisions sit beneath the surface. What looks effortless is the result of sustained negotiation with fear.

I hope that when viewers encounter my work, they recognise something of their own inner fractures and see how vulnerability, when faced directly, can become a source of unexpected strength.

artist statement



Silver linings
Metal flake and automotive paint on canvas with wooden frame
102 x 112cm
2025



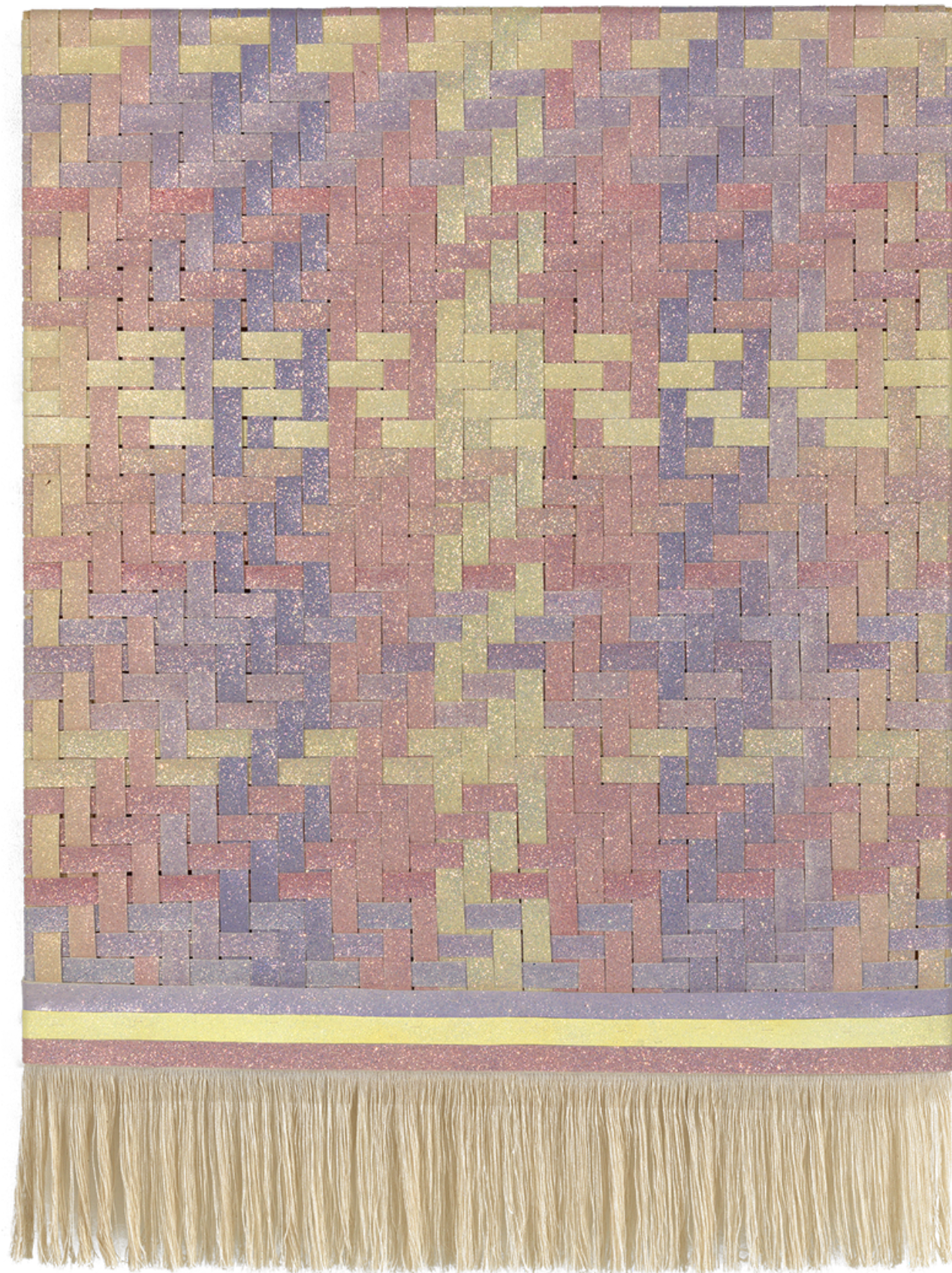
Levels of my soul
Metal flake and automotive paint on canvas with wooden frame
102 x 112cm
2025



Revelation
Metal flake and automotive paint on canvas With hand sprayed wooden frame
82 x 102 cm
2025



Interconnected
Metal flake and automotive paint on canvas and raw hessian, woven reconstruction,
with turmeric dyed frill
90 x 120cm
2025



Sweet entanglement
Metal flake and automotive paint on canvas woven, twill reconstruction with frill
65 x 80cm
2025

Vita

- 1973 Born in Malawi, Africa
- 1995 LLB (Masters in Law)
University of Witswatersrand, South Africa
- 1996 Diploma in management.
Wits Business School, South Africa
- 2001 Central Saint Martins College of Art
Contemporary Painting Class
- 2014 JJAADA Academy
Diploma in Interior Design
- 2024 City Lit University
Fine Art Painting Master Class

Awards/Memberships (Selection)

- Proud Collector Female Artist Award, Proud Collector, 2021
- Women United Art Prize, 2023
- Artist in residence for Reloved Again townhouse, 2024

Charity & Collaborations (Selection)

- Christies Private Auction for the Chaim Sheba Medical Center, Germany
- Proud Collector Charity Auction, Germany
- Brothers for life, Supperclub London, charity auction, UK
- EIFA International School, teaching art activity to children, UK

Private Collections (Selection)

- Sarah Doll Steinberg, UK
- Michelle Frost, UK
- Muriel Lipman, UK
- Sara Ettlinger, UK
- Ashok Lohiya, UK
- Janine Lazard, South Africa
- Michael Boitier, UK
- Richard Jaffee, UK
- Natalie Malka, UK
- Dryer Family Collection, UK
- Listercheese Family Collection, UK
- Fletcher Family Collection, UK
- Diamond Family Collection, UK
- Wronski Family Collection, UK
- Heilbron Family Collection, South Africa
- Abrahms Family Collection, UK
- Meyers Family Collection, UK

Institutional/Company Collections (Selection)

- Manray Partners
- Morgen & Stern
- Lusoel Electronics

Exhibitions (Selection)

2025

"Sagacious", Luminoir Art Gallery, London, UK

"Exhibition", Estila, Clerkenwell, London, UK

2024

"The Emancipation of Self", D Contemporary, Mayfair, London, UK

"The Shape of Things to Come", Artcan, Fulham, London, UK

"Wunderkammer", Bobcat Gallery, Shepherds Market, London, UK

"The Dark Side, 4th Edition", Boomer Gallery, Tower Bridge, London, UK

2023

"Exhibition", Dynamite Gallery, Clerkenwell, London, UK

"Artcan Home Exhibition", The Department Store, Brixton, London, UK

"Artcan Alchemical Exhibition", Gallery 475, Fulham, London, UK

"Alchemy Exhibition", Create Magazine, UK

"Winter Online Exhibition", The Flux Review, UK

2022

"The Other Art Fair" (TOAF), Truman Brewery, Brick Lane, London, UK

"Exhibition", The Residence Restaurant, Notting Hill, London, UK

"Bringing Colour to the World", Art Mums United, UK

"Life in Colour", Curators Salon, UK



Shelly Pamensky

shellypamensky.com
shelly@shellypamensky.com

contact